

The image is a reproduction of the painting 'Rain, Steam, and Great Bridge' by the English Romantic painter J.M.W. Turner. The painting depicts a view of the Maidenhead Railway Bridge over the Maidenhead Railway Station, with the Great Ouse River in the foreground. The scene is characterized by rain and steam, creating a hazy, atmospheric effect. The brushwork is visible and expressive, typical of the Impressionist style. The color palette is dominated by blues, greys, and whites, with some warmer tones in the sky and the bridge's structure. The overall mood is one of a quiet, rainy day in a bustling industrial landscape.

Starry Night

Room With Chair



Cartzzles are pictures you must first piece together by laying cards on top of each other (with or without the template, depending on your dedication). Then, start again, using challenges this time!

This box holds 2 Cartzzles with 50 cards each (one being on the front side, the other being on the back side):

Starry Night (front side) **and Room With Chair** (back side).

the game also contains:

- 1 template card
- 1 Challenge card for Starry Night
- 1 Challenge card for Room With Chair
- 1 Help card & this How to play card

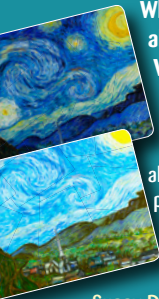


A few words of advice

- Some elements differ from card to card (either by nature, color or shape), even if they should go in the same place? This is normal!
- You feel some cards overlap in a weird way during your first attempt? Not too bad... if you can stand the weirdness, that is.
- Check every single detail to find the best angle to lay your card.
- Train your dexterity and try to find techniques to lay the cards, to hold them, and to slide them very delicately. You can also play on a game mat for maximum efficiency.

Starry Night

(Vincent Van Gogh)



What a treat! This Cartzzle allows you to do what even Van Gogh himself couldn't do or see...

This is the first Cartzzle to allow you to compose two paintings at the same time : **The Starry Night** as you know it, but also the same landscape... by day! **The**

Sunny Day!

You need to tell apart the 25 day cards and 25 night cards.

Once you are done with this, use 20 cards for each painting, and for each, use the five extra cards to create a frieze that connects the two marked edges...



Starry Night - Challenges

The night side has black borders.



The day side has white borders.



Two players:

Each player takes the 25 cards of their Cartzzle.
The first player who creates their 20-cards painting AND their 5-cards frieze wins the game!

Room With Chair

(Vincent Van Gogh)

Dear Vincent was a bit... messy. You'll re-discover one of his most famous paintings as he painted it, but also in a new version where he left twenty-ish sketches or paintings... including one of his most important pieces, which will look familiar to you, and which he astutely put right behind his window!

1. Piece together the Room With Chair, laying all the cards, without caring about any surprising overlaps...



Room With Chair - Challenges

2. After you've documented a little, try again and piece together the painting as it originally was.

Beware! Vincent Van Gogh has made multiple versions of this painting, and it has been reinterpreted many times. Please check your sources!

In any case, feel free to change a few paintings from the frames on the wall...
Decorating homes is all about personal taste, no one will judge you...



Want to know more?

You'll find more info on one-eared redheads on our website...



[www.jeux-opla.fr
/cartzzle/nuit-etoilee](http://www.jeux-opla.fr/cartzzle/nuit-etoilee)



Lost in the picture? Would you like some help? We hid a few tips and solutions on the game's website, if you use the right password:

Starry Night: **grandeours**
Room With Chair: **bazar**

Help



Want to have more?



More Cartzzles